



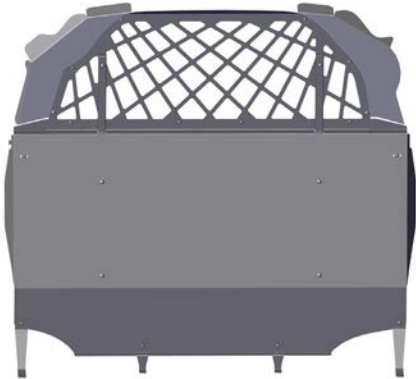
INSTALLATION INSTRUCTIONS

'14+ DODGE DURANGO

CB4 PRISONER CARGO BARRIER

475-0897

Before beginning the installation, confirm that you have received all of the parts for your package.
Read the instructions completely before starting installation.



TOOLS NEEDED:

- Ratchet
- 1/2" Socket
- 7 mm Deep Well Socket
- 3/16 Hex Key Socket

Parts Included:

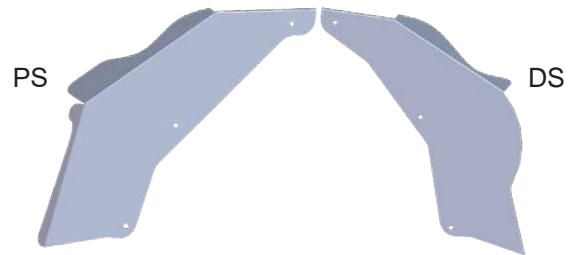
- Hardware Bag With Necessary Nuts, Bolts, Etc.



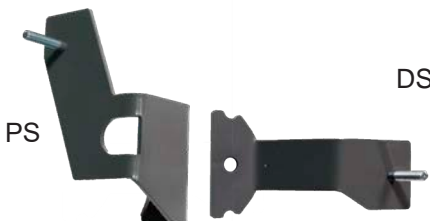
Lower Mount
Brackets



Support Tubes



Side Poly Wings



Inner Mount
Brackets



Outer Mount
Brackets

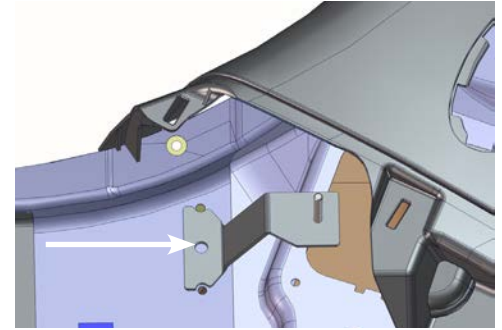


On C Pillar, pop cover using a small flathead screwdriver. Remove exposed 7mm screw. Pry away from OEM frame, the large lower trim piece that goes between C and D Pillar under window. **Repeat for other side.**

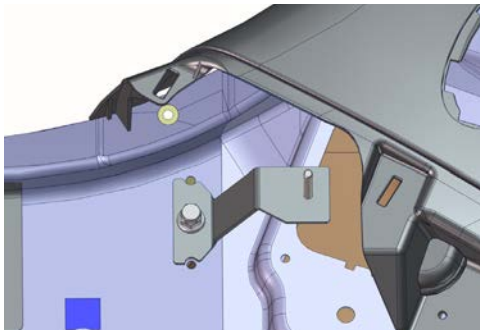


With lower trim removed, drill 1/2" hole into center indentation in trim as shown above. **Repeat for other side.**

Driver Side



Use Inner Mount Bracket to mark AVK hole location on D/S. Install AVK using directions on back page.

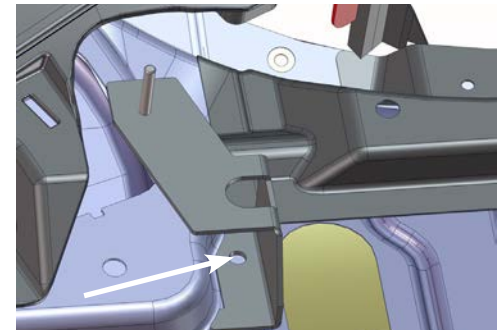


Once finished with AVK, install D/S Inner Mount Bracket.

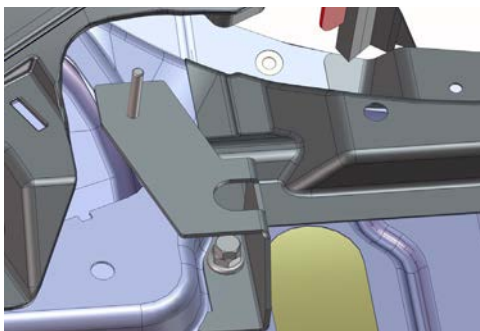


Reinstall lower OEM trim piece with Inner Mount Bracket stud sticking through drilled hole of trim.

Passenger Side



Use Inner Mount Bracket to mark AVK hole location on P/S. Install AVK using directions on back page.



Once finished with AVK, install P/S Inner Mount Bracket.



Reinstall lower OEM trim piece with Inner Mount Bracket stud sticking through drilled hole of trim.



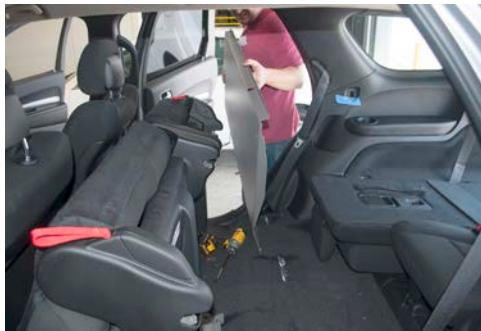
Loosely attach Lower Mount Brackets onto Lower Steel Barrier on the bent edge side.



INSTALLATION INSTRUCTIONS



Flip second row seating up towards front seats.



Install Lower Steel Barrier into vehicle. The Lower Mount Brackets should be facing the front of the vehicle. Place Lower Mount Brackets under OEM seat latches.



Loosely attach Outer Mount Brackets to Lower Steel Barrier using button head cap screws (1 per side). Then slide Outer Mount Bracket over exposed studs from Inner Mount Brackets. Secure using provided nylock nuts.



Cut away carpet around Lower Mount Bracket location. Mark AVK hole location onto OEM frame of each Lower Mount Bracket.



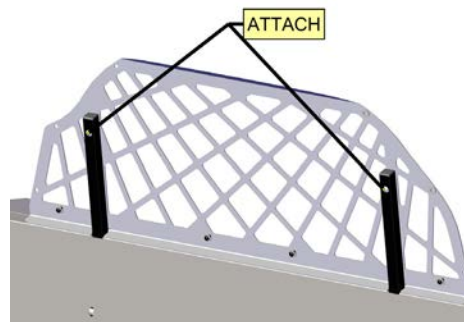
Rotate/Remove Lower Mount Bracket one at a time, and install AVK using directions on back page. Secure Lower Mount Brackets to AVKs in OEM frame.



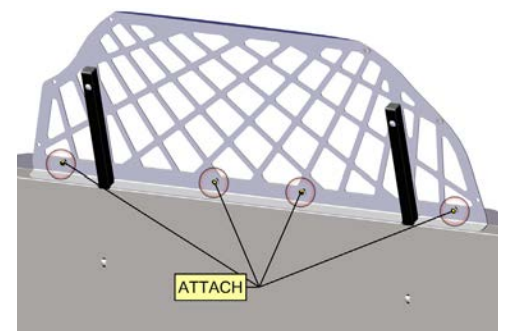
Place support tubes into Lower Steel Barrier from the front of vehicle. Loosely secure Support Tubes using provide carriage bolts and flange nuts (2 per side).



From second row seats, place Upper Secure Grid between Support Tubes and channel of Lower Steel Barrier.



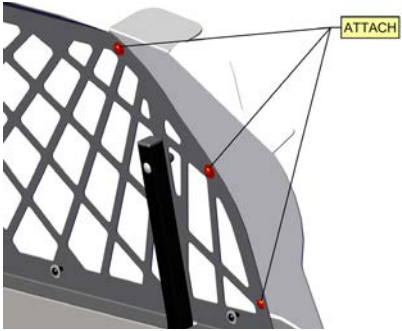
Secure Support Tubes to Secure Grid from cargo side.



From rear seat of vehicle, use button head cap screws to attach Secure Grid to Lower Steel Barrier. Tighten all hardware at this time.



INSTALLATION INSTRUCTIONS



Install Side Poly Wings through rear of vehicle. Secure using (2) Nylon bolts and nuts, and (1) carriage bolt with flange nut.



INSTALLATION INSTRUCTIONS AVK FASTENER

1. Drill out existing hole to 1/2" or drill new hole per installation instructions. (Pic A)
2. Place 5/16-18 x 1.5" long bolt through the 3/8" flange nut and hand thread bolt into the AVK fastener. (Pic B)
3. Place into 1/2" drilled hole (Pic C) and use 9/16" Box End Wrench to secure the flange nut. (Pic D) Apply pressure on the flange nut, pressing AVK fastener into hole. Using an air wrench, tighten the 5/16-18 x 1.5" bolt. (Pic E) This will allow the AVK fastener to secure onto the backside of the metal. Remove 5/16-18 x 1.5" bolt. (Pic F)
4. Follow installation instructions from this point forward.

Installation video can be viewed at :

<http://jottopublicsafety.gojotto.com/additional-categories/downloads.html>



A



B



C



D



E



F

