



SETTING UP THE "ACD"

CABLE-DOCK DESKTOP

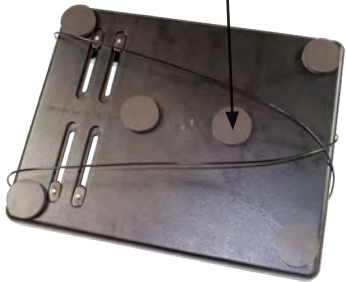


SETTING UP THE "ACD"

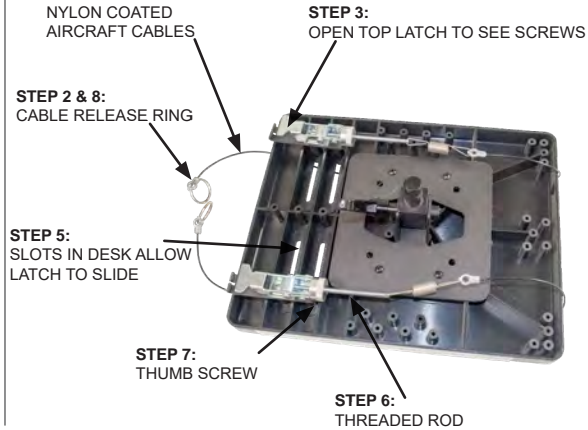
CABLE-DOCK DESKTOP

TOP VIEW

STEP 1:
FOAM SHOCK PAD



BOTTOM VIEW



STEP 1 Place the six foam shock pads on desktop surface in a similar pattern shown on top view.

STEP 2 Free cables from latches and flip desktop over, keep latches on left side.

STEP 3 Open top latch to access the two adjusting screws for properly locating the latch location in desk slots (you may need to screw the long threaded rod out of the way). Use a standard blade screwdriver to loosen (but not remove) the two bottom screws.

STEP 4 Turn desk right side up with the latches on the left side (as shown in top view.) Place computer on top and line up top cable to rest above the "F" (function) keys, then secure by throwing latch.

STEP 5 Slide bottom latch and cable to desired position, usually just below last row of keys and secure. If needed, fine tune bottom latch position. Now tighten the two latch screws.

STEP 6 Adjust the tightening tension of the cables by rolling the cable between the thumb and fingers. This will turn the threaded rod in the latch and thereby adjust the cable length to achieve the desired tension.

CAUTION: DO NOT SHORTEN THE CABLES TO A POINT WHERE THE SPRING UNDER THE DESKTOP IS STRETCHED MORE THAN 2 OR 3 TIMES THE ORIGINAL LENGTH WHEN LATCH ASSEMBLY IS CLOSED.

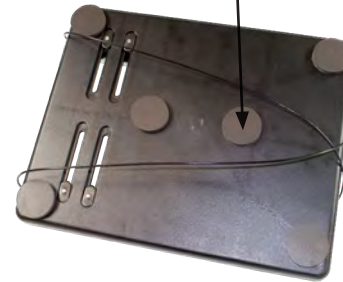
STEP 7 To prevent release of latch, use thumb screw to tighten against the latch. To release the latch, back thumb screw one full turn and throw latch.

STEP 8 To release and secure cables, pull down on metal ring at end of cable and feed cable into the forked prongs attached to each latch. Pull down and away to remove.

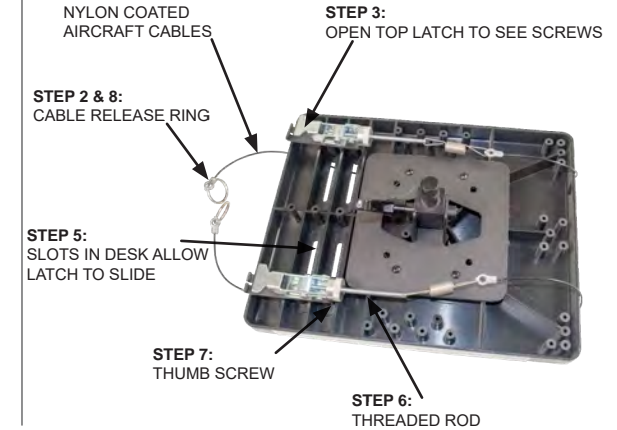
CAUTION SHORTENING THE CABLE LENGTH IN AN ATTEMPT TO MORE SECURELY HOLD THE LAPTOP IN PLACE COULD RESULT IN DAMAGE TO YOUR COMPUTER. THE SPRINGS UNDERNEATH THE DESKTOP SHOULD NEVER BE STRETCHED MORE THAN 2 OR 3 TIMES THE ORIGINAL LENGTH.

TOP VIEW

STEP 1:
FOAM SHOCK PAD



BOTTOM VIEW



STEP 1 Place the six foam shock pads on desktop surface in a similar pattern shown on top view.

STEP 2 Free cables from latches and flip desktop over, keep latches on left side.

STEP 3 Open top latch to access the two adjusting screws for properly locating the latch location in desk slots (you may need to screw the long threaded rod out of the way). Use a standard blade screwdriver to loosen (but not remove) the two bottom screws.

STEP 4 Turn desk right side up with the latches on the left side (as shown in top view.) Place computer on top and line up top cable to rest above the "F" (function) keys, then secure by throwing latch.

STEP 5 Slide bottom latch and cable to desired position, usually just below last row of keys and secure. If needed, fine tune bottom latch position. Now tighten the two latch screws.

STEP 6 Adjust the tightening tension of the cables by rolling the cable between the thumb and fingers. This will turn the threaded rod in the latch and thereby adjust the cable length to achieve the desired tension.

CAUTION: DO NOT SHORTEN THE CABLES TO A POINT WHERE THE SPRING UNDER THE DESKTOP IS STRETCHED MORE THAN 2 OR 3 TIMES THE ORIGINAL LENGTH WHEN LATCH ASSEMBLY IS CLOSED.

STEP 7 To prevent release of latch, use thumb screw to tighten against the latch. To release the latch, back thumb screw one full turn and throw latch.

STEP 8 To release and secure cables, pull down on metal ring at end of cable and feed cable into the forked prongs attached to each latch. Pull down and away to remove.

CAUTION SHORTENING THE CABLE LENGTH IN AN ATTEMPT TO MORE SECURELY HOLD THE LAPTOP IN PLACE COULD RESULT IN DAMAGE TO YOUR COMPUTER. THE SPRINGS UNDERNEATH THE DESKTOP SHOULD NEVER BE STRETCHED MORE THAN 2 OR 3 TIMES THE ORIGINAL LENGTH.

ADDITIONAL MOUNTING PLATE OPTIONS



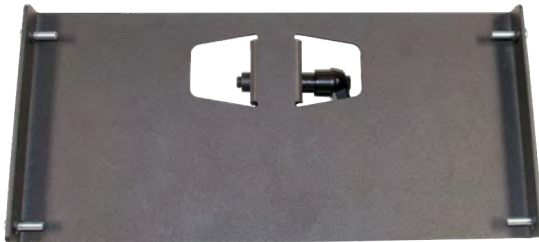
425-5182 GK Mounting Plate

The GK Mounting Plate (425-5182) is designed with a hole pattern that allows it to retrofit to several different desktops and docking stations. Specifically the Gamber Johnson notebook desktops and docks, Kodiak Mobile mounting stations and docks, First Mobile docks and Motorola docks.



425-5182 GK Mounting Plate

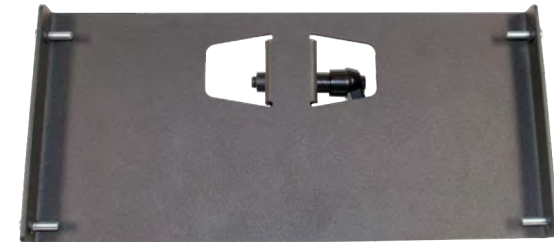
The GK Mounting Plate (425-5182) is designed with a hole pattern that allows it to retrofit to several different desktops and docking stations. Specifically the Gamber Johnson notebook desktops and docks, Kodiak Mobile mounting stations and docks, First Mobile docks and Motorola docks.



425-5330 P2 Mounting Plate

The P2 Mounting Plate (425-5330) is designed to retrofit to the Panasonic WEB-301 Vehicle docking station (CF31/30/etc).

We also have a smaller version that is designed for the Panasonic WEB-194 Vehicle docking station (CF18/19...425-5569)

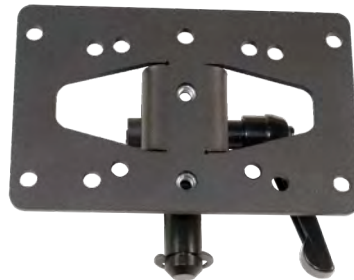


425-5330 P2 Mounting Plate

The P2 Mounting Plate (425-5330) is designed to retrofit to the Panasonic WEB-301 Vehicle docking station (CF31/30/etc).

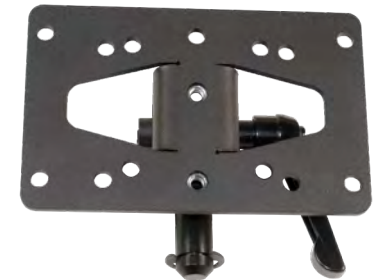
We also have a smaller version that is designed for the Panasonic WEB-194 Vehicle docking station (CF18/19...425-5569)

The LedCo Mounting Plate (425-1151) has a hole pattern that allows it to retrofit to both LedCo and Havis mounting stations, desktops and docking stations.



425-1151 LedCo Mounting Plate

The LedCo Mounting Plate (425-1151) has a hole pattern that allows it to retrofit to both LedCo and Havis mounting stations, desktops and docking stations.



425-1151 LedCo Mounting Plate



209 W. EASY ST., ROGERS, AR 72756 • JOTTOPUBLICSAFETY.COM • 9/24

Jotto Desk™ is a patented product and Registered Trademark of Assembled Products™ Corporation.

Specifications subject to change without notice.

050-0063-00



209 W. EASY ST., ROGERS, AR 72756 • JOTTOPUBLICSAFETY.COM • 9/24

Jotto Desk™ is a patented product and Registered Trademark of Assembled Products™ Corporation.

Specifications subject to change without notice.

050-0063-00

